



Light efficiency:



Light quality:



Color temperature:

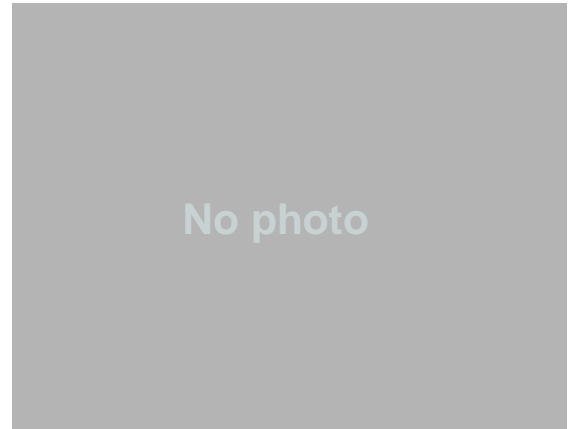


Output: 3425 lm

Peak: 1160 cd

Power: 42,5 W

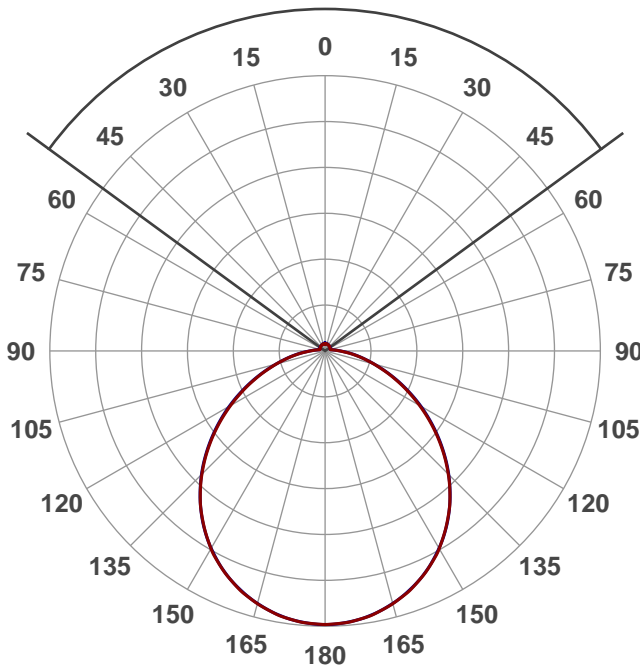
PF: 0,96



Beam angle

107,7°

2 PLANES



Product name:

Golden eye 3000 K - (måling 1)

Date and time:

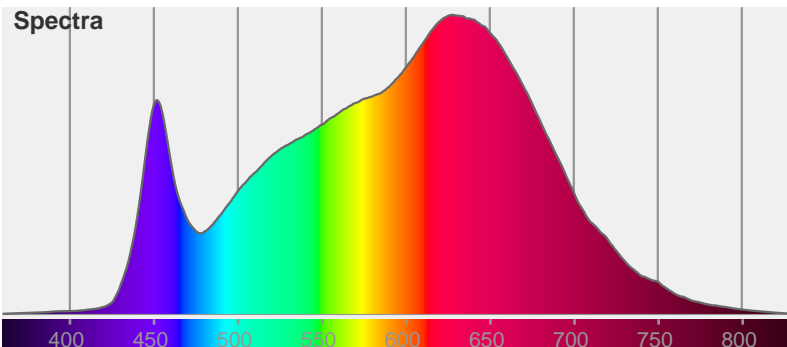
18-05-2017 10:42:34

Color



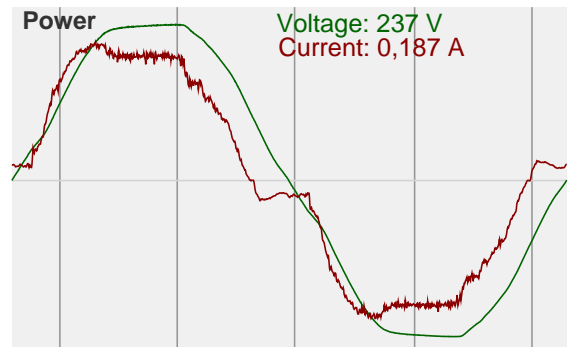
CIE1931
x: 0,415
y: 0,380

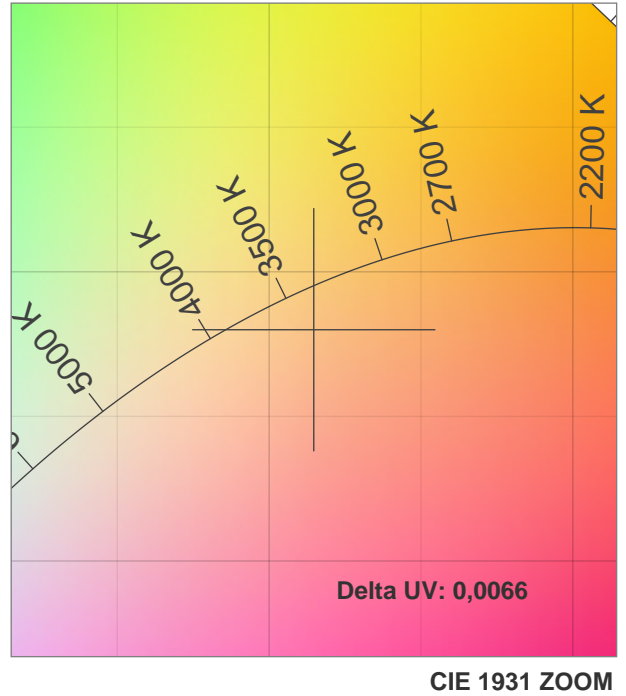
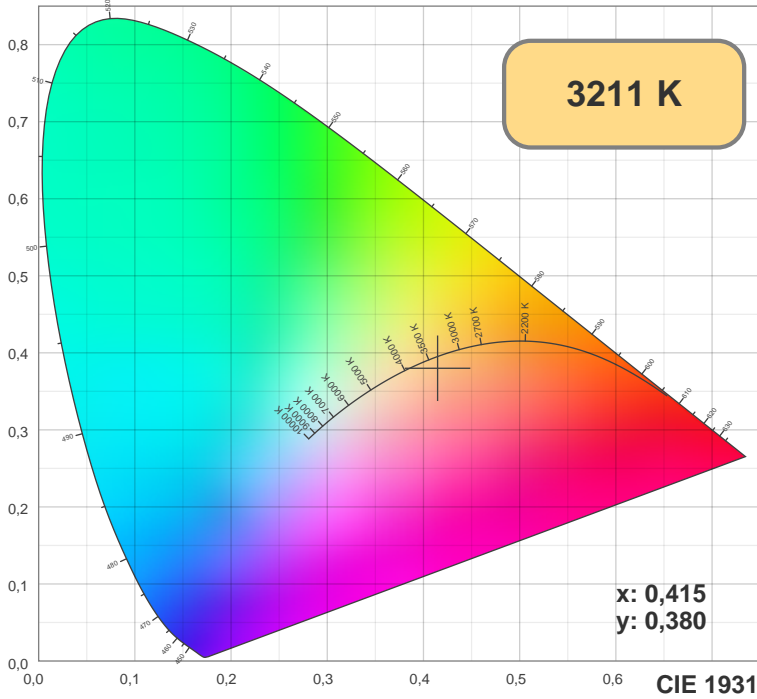
Spectra



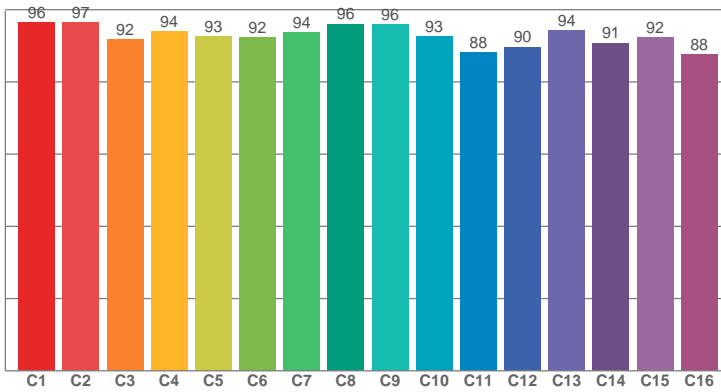
Power

Voltage: 237 V
Current: 0,187 A

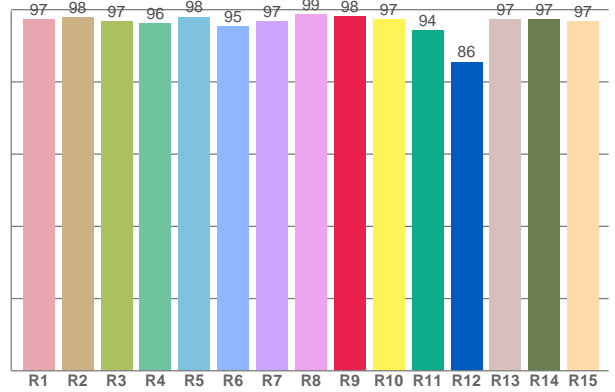




TM30: 93,0



CRI: 97,1 (R1-R8)



CRI R values, only R1-R8 are used to calculate final CRI value

R1	R2	R3	R4	R5	R6	R7	R8	R9	R10	R11	R12	R13	R14	R15
97,39	97,86	96,72	96,24	97,97	95,32	96,77	98,61	98,17	97,34	94,20	85,54	97,32	97,39	96,84

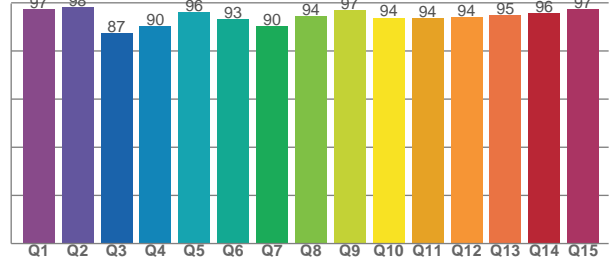
TM30 C values, 16 binned values out of total of 99 C values

C1	C2	C3	C4	C5	C6	C7	C8	C9	C10	C11	C12	C13	C14	C15	C16
96,42	96,54	91,70	93,93	92,67	92,41	93,70	96,09	95,94	92,60	88,18	89,67	94,31	90,78	92,30	87,60

CQS Q values

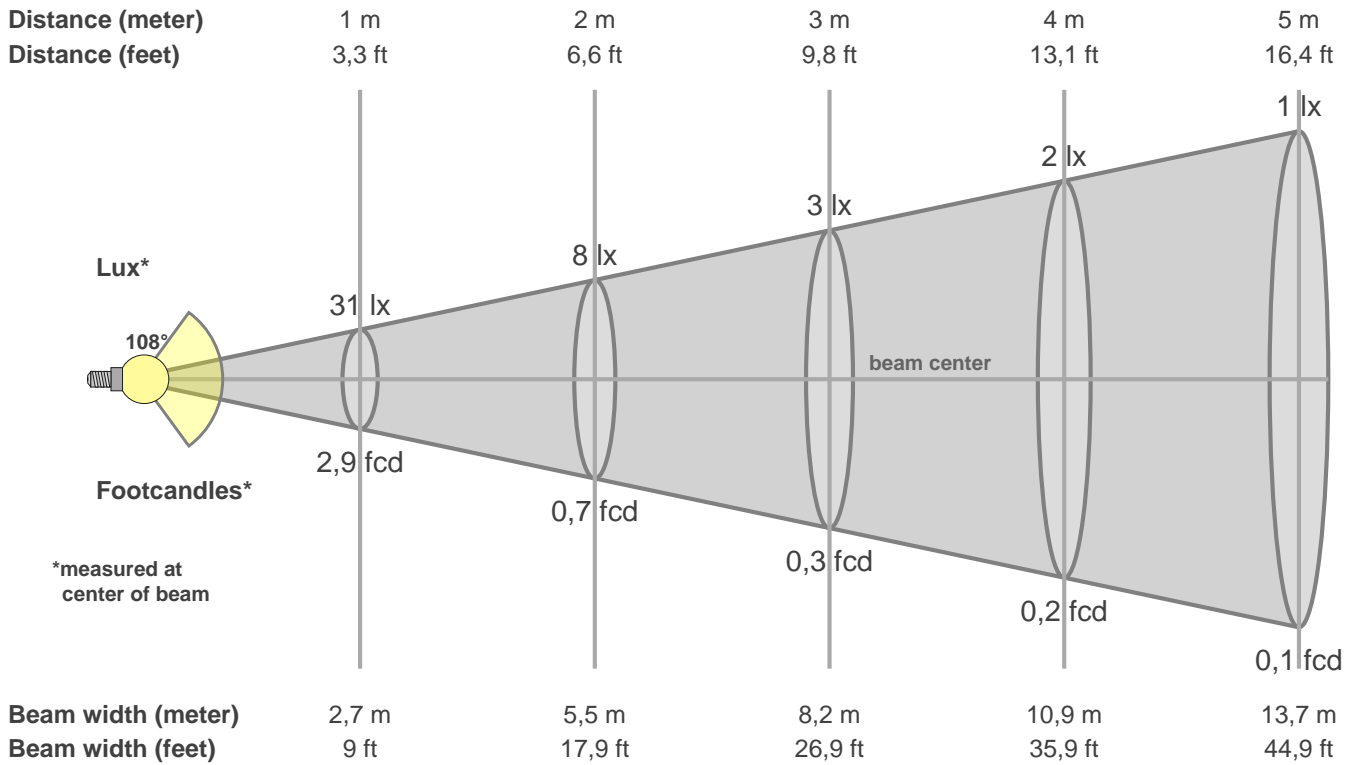
Q1	Q2	Q3	Q4	Q5	Q6	Q7	Q8	Q9	Q10	Q11	Q12	Q13	Q14	Q15
97,23	98,09	87,47	90,17	96,17	93,32	90,42	94,41	96,84	93,87	93,58	93,90	94,84	95,58	97,43

CQS: 93,4



Color parameters

CCT	CRI	CRI R9	TM30 Rf	TM30 Rg	CQS	x	y	u	v	Duv
3211 K	97,1	98,2	93,0	104,2	93,4	0,4	0,4	0,2	0,3	0,0066



Intensities in 0° c-plane

0°	5°	10°	15°	20°	25°	30°	35°	40°	45°	50°	55°	60°	65°	70°	75°	80°	85°	90°	95°
31	30	30	30	31	29	28	28	27	28	26	25	24	24	23	23	29	42	63	100
100%	97%	97%	95%	99%	93%	89%	91%	87%	88%	83%	79%	78%	78%	72%	74%	92%	134%	203%	321%

Intensities in 90° c-plane

0°	5°	10°	15°	20°	25°	30°	35°	40°	45°	50°	55°	60°	65°	70°	75°	80°	85°	90°	95°
31	32	33	32	32	30	29	29	28	27	27	27	26	24	23	23	30	43	64	104
100%	103%	105%	102%	101%	96%	93%	93%	89%	88%	87%	88%	83%	78%	73%	75%	97%	138%	206%	332%

Intensities in 180° c-plane

0°	5°	10°	15°	20°	25°	30°	35°	40°	45°	50°	55°	60°	65°	70°	75°	80°	85°	90°	95°
31	30	30	30	31	29	28	28	27	28	26	25	24	24	23	23	29	42	63	100
100%	97%	97%	95%	99%	93%	89%	91%	87%	88%	83%	79%	78%	78%	72%	74%	92%	134%	203%	321%

Intensities in 270° c-plane

0°	5°	10°	15°	20°	25°	30°	35°	40°	45°	50°	55°	60°	65°	70°	75°	80°	85°	90°	95°
31	32	33	32	32	30	29	29	28	27	27	27	26	24	23	23	30	43	64	104
100%	103%	105%	102%	101%	96%	93%	93%	89%	88%	87%	88%	83%	78%	73%	75%	97%	138%	206%	332%

Beam angle 50%	Field angle 10%	Cutoff angle 2,5%	Intensity ratio in 120° cone	Intensity ratio in 90° cone
107,7°	167,0°	360,0°	2,6%	1,6%